

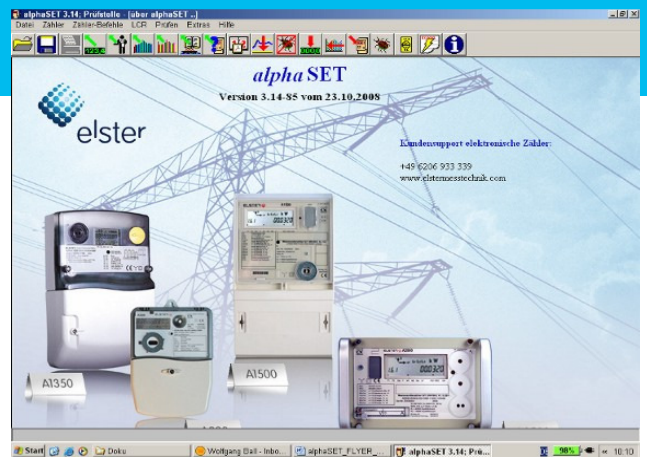
# Configuration tool *alphaSET*

## Configuration and reading tool for *alpha* meters

By using the configuration- and reading tool *alphaSET*, all *alpha* meters of the different types can be read out or parametrised. The readings can be done via the optical or electrical interface of the meter. The tool supports remote meter applications by using GSM or PSTN modems.

Furthermore *alphaSET* supports the efficient test mode of the meter and reduces the certification time dramatically.

*alphaSET* is a windows based tool and has to be installed onto a PC or Laptop. The program supports different user/access levels and is multi-lingual (german, english, french, and others.).

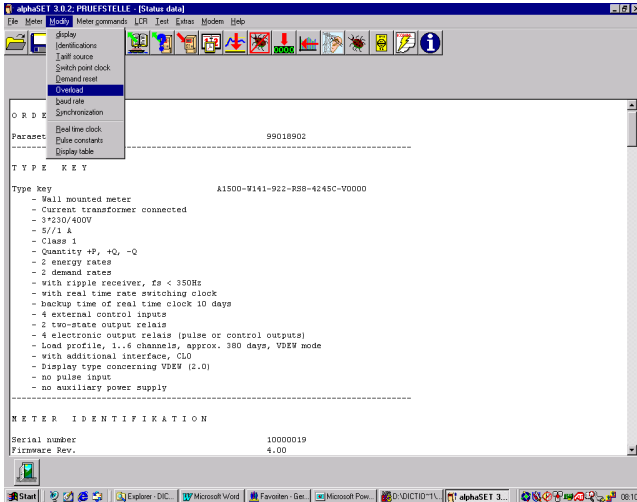


## Features

- **Setting and parametrisation**
  - Loading of configuration files
  - Transferring parameters files to the meter
- **Reading possibilities**
  - Register (index) data
  - Load profiles data (total or partial readout)
  - Log file (total or partial readout)
  - All meter settings
  - All data can be stored in ASCII-Format and can be processed by Excel
- **Formatted commands**
  - Read or set of time & date
  - Reset error conditions
  - Reset of power outage counters
  - Maximum demand reset
  - Reset load profile & log file
  - Reset register data
- **Activating of certification mode to reduce testing time**
  - Increasing of register solution
  - Increasing of pulse constants
  - Selection of LED quantity (active/reactive)
  - Selection of tariff source
- **Parameter modification**
  - Identifications, Passwords
  - Tariff source (clock, integrated LCR, external inputs)
  - Parameter for demand reset
  - Overload indication
  - Baud rates
  - Synchronization mode
  - Pulse constants
  - Transformer ratio
  - Display control
- **Remote metering**
  - All reading and setting features are supported remotely
  - Change of clock parameters
  - Support of all transparent modems (PSTN / ISDN / GSM)
- **Connection to LCR**
  - Configuration of the internal LCR can be done by optical interface of the meter

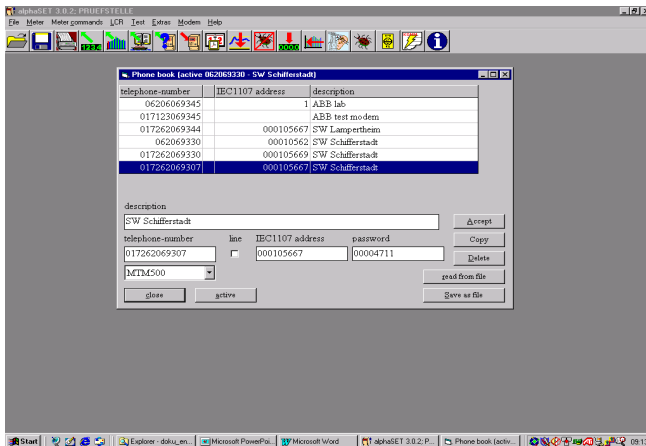


## Reading examples:



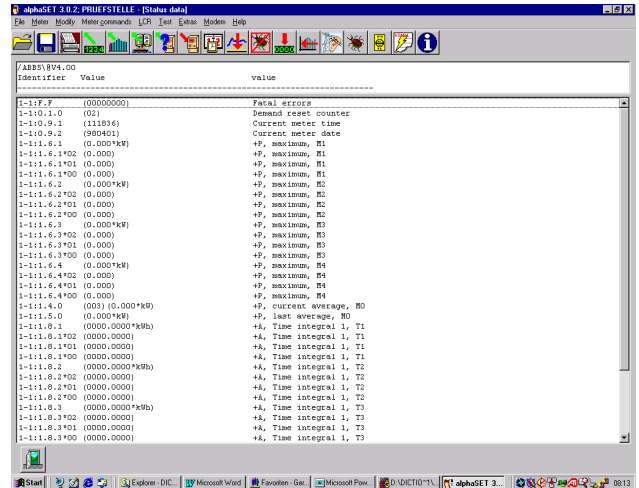
### Meter setting readout

Voltage, current, class, number of tariffs, load profile configuration, clock parameters, Display list, etc



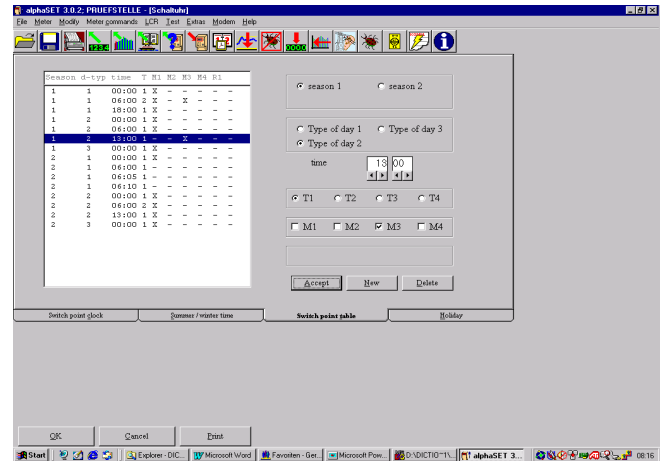
### Telephone book parameters

Telephone number, Customer ID, IEC address, password, modem type (GSM, ISDN, PSTN)



### Register data readout

identifier, measuring value with comment



### Internal tariff clock configuration

Controlling tariff dependent on day type, season, fixed or movable holidays, summer-/winter changeover

## Elster GmbH

Otto-Hahn-Str. 25  
68623 Lampertheim  
Germany

Phone +49 (0) 62 06 / 933-0  
Fax +49 (0) 62 06 / 933-292  
Mail to e-info@de.elster.com  
www.elstermesstechnik.com